



ELKHART  BRASS

BETTER EQUIPPED

MUNICIPAL FIRE FIGHTING EQUIPMENT

HANDLINE NOZZLES / PORTABLE MONITORS / APPLIANCES / ACCESSORIES

SAFE  FLEET

Driving Safety Forward™

A WARM WELCOME



BETTER EQUIPPED TO FIGHT

Understanding the needs of municipalities and offering quality products and solutions set Elkhart Brass apart. We are the industry's most experienced manufacturer of innovative firefighting and fire protection equipment. Manufacturing over 2,000 products, used in virtually every aspect of fire fighting, makes Elkhart Brass a leader. Our products are found in fire departments around the world, building systems and off-shore drilling sites, as well as in military, marine, mining and other industrial firefighting applications.

XD nation SAN BERNARDINO COUNTY, CA



HANDLINE NOZZLES **06-24**

| | |
|---------------------|----|
| Smooth Bore XD | 07 |
| XD Shutoffs | 09 |
| Chief XD | 13 |
| Select-O-Matic XD | 17 |
| Phantom XD | 19 |
| Nozzle Options | 21 |
| Forestry & Wildland | 23 |
| Mystery | 23 |

SPECIAL USE NOZZLES **25-32**

| | |
|------------------------|----|
| Floor Below Nozzle | 27 |
| Horizontal Void Nozzle | 28 |
| Bent Overhaul Tip | 29 |
| Straight Overhaul Tip | 30 |
| XD Washdown Kit | 31 |
| Misc. | 32 |

ACCESSORIES **33-42**

| | |
|-------------------------|----|
| Foam Expansion Tubes | 33 |
| Foam Eductors | 34 |
| XD Portable Flow Meter | 35 |
| Flow Testing Essentials | 37 |
| Standpipe Essentials | 39 |

MONITORS **43-48**

| | |
|-------------|----|
| RAM XD | 43 |
| Stinger 2.0 | 45 |

APPLIANCES **49-58**

| | |
|-------------------|----|
| Gate Valves | 50 |
| Gated Wyes | 51 |
| Plain Wyes | 52 |
| Valved Siamese | 53 |
| Plain Siamese | 54 |
| Clappered Siamese | 55 |
| Water Thiefs | 56 |
| Reducers | 57 |
| Wrenches | 58 |

MORE INFORMATION **59-62**

WHO WE ARE

WE'VE BEEN AROUND

Well known for its commitment to quality, value and customer service, Elkhart Brass celebrated its 100th anniversary in 2002. In 2015, Elkhart Brass was acquired by Safe Fleet creating the leading global provider of safety solutions for fleet vehicles. The combination of Elkhart Brass with FRC and Foam Pro enables the company to develop integrated systems of monitors, valves, foam proportioning, and electronic controls for the global emergency market. Elkhart Brass still operates at its original site in Elkhart, Indiana, utilizing the in-house foundry where aluminum and brass are poured daily. In addition to manufacturing, Elkhart Brass also specializes in product research and development, engineering, and product testing thanks to 3D rapid prototyping capabilities, a dedicated flow test facility, and a complete product machine shop.

CERTIFICATIONS AND QUALITY

Elkhart Brass is committed to quality, as demonstrated by its ISO-9001 Registered Quality System. Striving for ways to streamline processes while maintaining the quality craftsmanship customers expect, the company has excelled. An on-site foundry assures accurate documentation and quality of materials. On-site testing facilities are also a benefit. Because fire fighting is a dangerous occupation, the company makes a serious commitment to you by doing everything in its power to assure that when you use Elkhart Brass products, you have the highest quality and safest equipment available in the industry. As part of that commitment to quality, it continually strives to evaluate and innovate products, including upgrading certification credentials. Contact Elkhart Brass for further details or questions about a specific certification.

WARRANTY

Products are warranted in accordance with and subject to terms and conditions of Seller's standard Warranty Statement in effect on the date the applicable order is submitted. See Warranty Statement on website at www.safefleet.net/documents/ and download Elkhart Brass warranty document or use mobile phone to view here:



EST. 1902

BRASS TACKS

HARD FACTS

ENGINE COMPANY EDUCATION AND FACT-BASED EQUIPMENT SELECTION

Utilizing some of the country's top engine company instructors, we are checking our emotions at the door and presenting the pros and cons of the relevant engine company topics in the fire service. Part Art. Part Science. This educational video series will be sure to leave you better informed about nozzles, flows, your fire flow system, and engine company operations as a discipline.

Watch the entire series at : BrassTacksHardFacts.com



MOBILE APP

EVERYTHING NEEDED FOR FLOW TESTING NOW AT YOUR FINGERTIPS

- Smooth Bore Discharges & Flow/Pressure
- Nozzle Reaction for Smooth Bore Nozzles
- Nozzle Reaction for Fog Nozzles
- Pump Discharge Pressure for standard layouts, with ability to input hose coefficient depending on make and inside diameter
- Pump Discharge Pressure with elevation changes and appliances
- Pump Discharge Pressure for high-rise layouts
- Fire flow formula calculators for both the NFA and Iowa Formulas
- Also included in the app are direct links to the Brass Tacks Hard Facts video series

AVAILABLE FOR FREE DOWNLOAD



WHAT IS XD™?

Elkhart Brass XD™ nozzles take the industry standard for handline nozzles to a whole new level! They are built tough like no other nozzle for Xtreme Duty use, or XD. They are the only handline nozzles that offer a forged shutoff body and a forged metal bale handle for maximum strength. The XD Series also includes, as standard, a full round metal ball for the best stream performance, as well as fixed molded urethane or spinning stainless steel metal teeth that don't break. All indicators and markings are laser etched, with no labels to peel off or scratch. Ergonomic grip inserts help with handling and can also be color coded. The durability and efficiency of the XD Series ensure an embedded level of safety for you and your crew—fire after fire.





XD SMOOTH BORES

Taking the classic smooth bore tip to the next level with easy to read markings, added knurling for increased grip, and a durable neoprene bumper.

- Short Barrels, Long Barrels, and Stacks available
- Guaranteed to have a size to match up with any hose type
- Twelve different bumper colors to choose from on select models



XD SHUTOFFS

Built for Xtreme Duty use with a forged metal bale handle, full round metal ball, and laser etched markings. Customize these shutoffs with your logo and twelve different handle insert colors.

- 1.0", 1.5" and 2.5" models for any application
- Integrated smooth bores available to build the ultimate break-apart
- Perfectly aligned waterway for unmatched stream quality



CHIEF XD

The choice for fixed flow fog nozzles, the Chief XD is an absolute workhorse. Available in a variety of flow rates and pressures down to 50 psi (3.5 BAR).

- Forged metal bale handle
- No stickers to peel off or scratch
- You choose: Spinning metal teeth or fixed molded urethane teeth



SELECT-O-MATIC XD

Maximizing reach and stream quality based on available water supply the Select-O-Matic XD nozzle line of automatic nozzles will flow reliably until their last day in service.

- Unique outside of the waterway spring design requires ZERO lubrication
- Go high flow / low pressure with a 75 psi (5 BAR) version
- Pick with a one-piece model or tip only version and pair it with an XD Shutoff



PHANTOM XD

If selectable flow is your choice, then choose the Phantom XD. Positive interlocking, robust tactile selection grips ensure that choosing the desired flow rate won't be a problem even in the harshest conditions.

- The most durable selectable flow nozzle on the market
- Wide range of models to have your target flow covered
- Choose from 75 psi (5 BAR) and 100 psi (7 BAR) versions



WATCH AND LEARN

At these QR Codes throughout this catalog you will find our popular Elkhart Brass Knowledge Drop assets. Find quick access and mobile viewing of educational and training videos, links to web pages, industry tips and more information.



SMOOTH BORE XD™

Elkhart Brass took the classic smooth bore tip to the next level. The XD's smooth bore tips feature durable urethane bumpers and laser etching. You'll also find extra knurling added for increased control and grip.

KEY FEATURES:

- Lightweight aluminum construction
- Laser etched flow rates
- Durable urethane molded bumper
- Customize the model 187-XD and 188-XD with 12 different bumper colors

SMOOTH BORE SINGLE TIPS

185-XD – Exposed Extending Threads

1.5" Inlet / 1.5" Outlet / 4.5" (114 mm) Length

Available discharge sizes: 7/8", 15/16", 1", 1-1/16", 1-1/8", 1-3/16", 1-1/4"

187-XD – Short Barrel

1.5" Inlet / 4.5" (114 mm) Length

Available discharge sizes: 1/2", 7/8", 15/16", 1", 1-1/16", 1-1/8", 1-3/16", 1-1/4"

188-XD – Long Barrel

1.5" Inlet / 7.0" (177 mm) Length

Available discharge sizes: 7/8", 15/16", 1", 1-1/16", 1-1/8", 1-3/16", 1-1/4"



185-XD

187-XD

188-XD

SMOOTH BORE STACKED TIPS

ST-184-XD – High Rise Stack

1.5" Inlet / 6.625" (168 mm) Length

Available discharge sizes: 1" & 1-1/8"

ST-185-XD – FDNY Stack

1.5" Inlet / 6.625" (168 mm) Length

Available discharge sizes: 1/2" & 7/8", 15/16", 1-1/8", or 1-3/16"

ST-185-XD-IFD – Indy Stack

1.5" Inlet / 7.625" (193 mm) Length

Available discharge sizes: 1-1/8" & 1-1/4"

ST-185-XD-CAFS – CAFS Stack

1.5" Inlet / 7.625" (193 mm) Length

Available discharge sizes: 15/16" & 1-1/8"

ST-190-XD – Triple Stack

1.5" Inlet / 9.0" (228 mm) Length

Available discharge sizes: 1", 1-1/8" & 1-1/4"



ST-184-XD

ST-185-XD

ST-185-XD-IFD

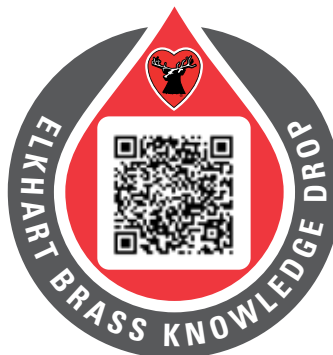
ST-185-XD-CAFS

ST-190-XD

SPECIFY WHEN ORDERING:

- Smooth Bore discharge size (if applicable)
- Bumper color (if applicable) (black standard)
- Inlet threads

SEE CUSTOMIZATION OPTIONS ON PAGES 21-22
CONFIGURE YOURS AT XDCONFIGURATOR.COM





XD™ SHUTOFFS

BALL SHUTOFFS AND PLAYPIPES:

Built for Xtreme Duty use with a forged metal bale handle, full round metal ball, and laser etched markings. Customize these shutoffs with your logo and twelve different handle insert colors.

KEY FEATURES:

- 1.0", 1.5" and 2.5" models for any application
- Integrated smooth bores available to build the ultimate break-apart
- Perfectly aligned waterway for unmatched stream quality



BUILDING A BREAK APART NOZZLE



XD SHUTOFFS Available with Optional Pistol Grip

1" XD Shutoff

1.0" Free Swivel Inlet / 1.0" Outlet
1.0" Waterway



Shown with optional Pistol Grip

1.5" XD Mid/Low Shutoff

1.5" Free Swivel Inlet / 1.5" Outlet
1.0" Waterway





XD SHUTOFFS Available with Optional Pistol Grip

1.5" XD Shutoff

1.5" Free Swivel Inlet /1.5" Outlet
1-3/8" Waterway



Shown with optional Pistol Grip

2.5" XD Shutoff

2.5" Free Swivel Inlet /1.5" Outlet
1-3/8" Waterway



XD SHUTOFFS WITH INTEGRAL SMOOTH BORE Available with Optional Pistol Grip

Available discharge sizes:

7/8", 15/16", 1", 1-1/16", 1-1/8", 1-3/16", 1-1/4"

1.5" XD Shutoff

1.5" Free Swivel Inlet /1.5" Outlet
1-3/8" Waterway



2.5" XD Shutoff

2.5" Free Swivel Inlet /1.5" Outlet
1-3/8" Waterway



Shown with optional Pistol Grip



X-D PLAYPIPES

2.5" X-D Playpipe

2.5" Free Swivel Inlet/1.5" Outlet
 1-3/8" Waterway
 Available with Ladder Hook



2.5" X-D Playpipe



2.5" Playpipe
 with Ladder Hook

SPECIFY WHEN ORDERING:

- Bale and Pistol Grip insert colors (black standard)
- Inlet/Outlet threads
- Integral Smooth Bore discharge size (if applicable)

SEE CUSTOMIZATION OPTIONS ON PAGES 21-22
 CONFIGURE YOURS AT XDCONFIGURATOR.COM



CHIEF XD™

FIXED FLOW HANDLINE NOZZLES: The choice for fixed flow fog nozzles, the Chief XD™ is an absolute workhorse designed for a lifetime of service. Available in a variety of flow rates and pressures down to 50 psi (3.5 BAR).

KEY FEATURES:

- Forged metal bale handle
- No stickers to peel off or scratch
- You choose: Spinning metal teeth or fixed molded urethane teeth



CHIEF XD TIPS

Mid-Range 1.5" Rigid Inlet

Flow Rates:

150 gpm @ 50 psi
(570 LPM @ 3.5 BAR)

125 gpm @ 75 psi
(475 LPM @ 5 BAR)

95 gpm @ 100 psi
(360 LPM @ 7 BAR)

160 gpm @ 50 psi
(600 LPM @ 3.5 BAR)

150 gpm @ 75 psi
(570 LPM @ 5 BAR)

125 gpm @ 100 psi
(475 LPM @ 7 BAR)

175 gpm @ 50 psi
(660 LPM @ 3.5 BAR)

175 gpm @ 75 psi
(660 LPM @ 5 BAR)

150 gpm @ 100 psi
(570 LPM @ 7 BAR)

185 gpm @ 75 psi
(700 LPM @ 5 BAR)

175 gpm @ 100 psi
(660 LPM @ 7 BAR)

200 gpm @ 75 psi
(750 LPM @ 5 BAR)



High-Range 1.5" Rigid Inlet

Flow Rates:

185 gpm @ 50 psi
(700 LPM @ 3.5 BAR)

250 gpm @ 75 psi
(950 LPM @ 5 BAR)

250 gpm @ 100 psi
(950 LPM @ 7 BAR)

210 gpm @ 50 psi
(795 LPM @ 3.5 BAR)

300 gpm @ 75 psi
(1140 LPM @ 5 BAR)

250 gpm @ 50 psi
(950 LPM @ 3.5 BAR)

265 gpm @ 50 psi
(1000 LPM @ 3.5 BAR)



CHIEF XD NOZZLES

Low-Range 1.0" Free Swivel Inlet/1.0" Waterway

Available with Optional Pistol Grip

Flow Rates:

15 gpm @ 100 psi
(60 LPM @ 7 BAR)

30 gpm @ 100 psi
(115 LPM @ 7 BAR)

45 gpm @ 100 psi
(170 LPM @ 7 BAR)

60 gpm @ 100 psi
(230 LPM @ 7 BAR)



Shown with optional Pistol Grip

Mid/Low-Range 1.5" Free Swivel Inlet/1.0" Waterway

Available with Optional Pistol Grip

Flow Rates:

125 gpm @ 75 psi (475 LPM @ 5 BAR) 60 gpm @ 100 psi (230 LPM @ 7 BAR)

75 gpm @ 100 psi (300 LPM @ 7 BAR)

95 gpm @ 100 psi (360 LPM @ 7 BAR)

125 gpm @ 100 psi (475 LPM @ 7 BAR)

150 gpm @ 100 psi (570 LPM @ 7 BAR)



Mid-Range 1.5" Free Swivel Inlet/1-3/8" Waterway

Available with Optional Pistol Grip

Flow Rates:

150 gpm @ 50 psi (570 LPM @ 3.5 BAR) 125 gpm @ 75 psi (475 LPM @ 5 BAR) 95 gpm @ 100 psi (360 LPM @ 7 BAR)

160 gpm @ 50 psi (600 LPM @ 3.5 BAR) 150 gpm @ 75 psi (570 LPM @ 5 BAR) 125 gpm @ 100 psi (475 LPM @ 7 BAR)

175 gpm @ 50 psi (660 LPM @ 3.5 BAR) 175 gpm @ 75 psi (660 LPM @ 5 BAR) 150 gpm @ 100 psi (570 LPM @ 7 BAR)

185 gpm @ 75 psi (700 LPM @ 5 BAR) 175 gpm @ 100 psi (660 LPM @ 7 BAR)

200 gpm @ 75 psi (750 LPM @ 5 BAR)



Shown with optional Pistol Grip

High-Range 1.5" Free Swivel Inlet/1-3/8" Waterway

Available with Optional Pistol Grip

Flow Rates:

| | | |
|---|---------------------------------------|--|
| 185 gpm @ 50 psi (700 LPM @ 3.5 BAR) | 250 gpm @ 75 psi (950 LPM @ 5 BAR) | 250 gpm @ 100 psi (950 LPM @ 7 BAR) |
|---|---------------------------------------|--|

| | |
|---|--|
| 210 gpm @ 50 psi (795 LPM @ 3.5 BAR) | 300 gpm @ 75 psi (1140 LPM @ 5 BAR) |
|---|--|

250 gpm @ 50 psi
(950 LPM @ 3.5 BAR)

265 gpm @ 50 psi
(1000 LPM @ 3.5 BAR)



Shown with optional Pistol Grip

High-Range 2.5" Free Swivel Inlet/1-3/8" Waterway

Available with Optional Pistol Grip

Flow Rates:

| | | |
|---|---------------------------------------|--|
| 185 gpm @ 50 psi (700 LPM @ 3.5 BAR) | 250 gpm @ 75 psi (950 LPM @ 5 BAR) | 250 gpm @ 100 psi (950 LPM @ 7 BAR) |
|---|---------------------------------------|--|

| | |
|---|--|
| 210 gpm @ 50 psi (795 LPM @ 3.5 BAR) | 300 gpm @ 75 psi (1140 LPM @ 5 BAR) |
|---|--|

250 gpm @ 50 psi
(950 LPM @ 3.5 BAR)

265 gpm @ 50 psi
(1000 LPM @ 3.5 BAR)



SPECIFY WHEN ORDERING:

- Flow rate and pressure
- Bumper, bale handle, and pistol grip insert color (orange standard)
- Spinning stainless steel metal teeth (standard) or fixed molded urethane teeth
- Inlet threads



**SEE CUSTOMIZATION OPTIONS ON PAGES 21-22
CONFIGURE YOURS AT XDCONFIGURATOR.COM**

BEST PRACTICE APPLICATIONS

INDUSTRIAL FIREFIGHTING

FOAM OPERATIONS

DEFENSIVE FIREFIGHTING



SELECT-O-MATIC XD™

AUTOMATIC FLOW HANDLINE NOZZLES: The Select-O-Matic® XD™ automatic handline nozzle adjusts to fluctuating water supply conditions to maintain effective pressure and a consistent fire stream in all flow ranges. It does so by generating back pressure by using a patented internal spring design that leaves the waterway unobstructed. This mechanism ensures a quality fire stream regardless of flow, and requires zero maintenance. Maximizing reach and stream quality based on available water supply, the Select-O-Matic XD nozzle line of automatic nozzles will flow reliably until their last day in service.

KEY FEATURES:

- Unique outside of the waterway spring design requires ZERO lubrication
- Go high flow / low pressure with a 75 psi (5 BAR) version
- Pick with a one-piece model or tip-only version and pair it with an XD Shutoff

SEE CUSTOMIZATION OPTIONS ON PAGES 21-22
CONFIGURE YOURS AT XDCONFIGURATOR.COM

SPECIFY WHEN ORDERING:

- Flow rate and pressure
- Bumper, bale handle, and pistol grip insert color (yellow standard)
- Spinning stainless steel metal teeth (standard) or fixed molded urethane teeth
- Inlet threads



SELECT-O-MATIC XD TIPS

Mid-Range 1.5" Rigid Inlet

75 psi (5 BAR)

Flow range: 60-200 gpm (230-750 LPM)

100 psi (7 BAR)

Flow range: 60-200 gpm (230-750 LPM)



High-Range 1.5" Rigid Inlet

75 psi (5 BAR)

Flow range: 75-325 gpm (300-1230 LPM)

100 psi (7 BAR)

Flow range: 75-325 gpm (300-1230 LPM)



SELECT-O-MATIC XD NOZZLES Available with Optional Pistol Grip

Low-Range 1.0" Free Swivel Inlet/1.0" Waterway

100 psi (7 BAR)

Flow range: 10-75 gpm (40-300 LPM)



Shown with optional Pistol Grip

Mid/Low-Range 1.5" Free Swivel Inlet/1.0" Waterway

100 psi (7 BAR)

Flow range: 60-125 gpm (230-475 LPM)



Mid-Range 1.5" Free Swivel Inlet/1-3/8" Waterway

Flow Rates:

75 psi (5 BAR)

Flow range: 60-200 gpm (230-750 LPM)

100 psi (7 BAR)

Flow range: 60-200 gpm (230-750 LPM)



High-Range 1.5" Free Swivel Inlet/1-3/8" Waterway

Flow Rates:

75 psi (5 BAR)

Flow range: 75-325 gpm (300-1230 LPM)

100 psi (7 BAR)

Flow range: 75-325 gpm (300-1230 LPM)



Shown with optional Pistol Grip

High-Range 2.5" Free Swivel Inlet/1-3/8" Waterway

Flow Rates:

75 psi (5 BAR)

Flow range: 75-325 gpm (300-1230 LPM)

100 psi (7 BAR)

Flow range: 75-325 gpm (300-1230 LPM)





PHANTOM XD™

SELECTABLE FLOW HANDLINE NOZZLES: The Phantom® XD™ selectable flow nozzle series has your target flow covered! With different pressure and flow ranges available, there is one to meet your need. Built with positive interlocking, robust tactile selection grips, selecting the desired flow rate won't be a problem even in the harshest conditions. If selectable flow is your choice, then choose the Phantom XD.

KEY FEATURES:

- The most durable selectable flow nozzle on the market
- Wide range of models to have your target flow covered
- Choose from 75 psi (5 BAR) and 100 psi (7 BAR) versions



PHANTOM XD NOZZLES Available with Optional Pistol Grip

Low-Range 1.0" Free Swivel Inlet/1.0" Waterway

100 psi (7 BAR)

Settings: 15-30-45-60 gpm (60-115-270-230-360-230 LPM)



Shown with optional Pistol Grip

Mid/Low-Range 1.5" Free Swivel Inlet/1.0" Waterway

100 psi (7 BAR)

Settings: 30-60-95-125 gpm (115-230-360-475 LPM)



Shown with optional Pistol Grip

Mid-Range 1.5" Free Swivel Inlet/1-3/8" Waterway

Flow Rates:

75 psi (5 BAR)

Settings: 30-60-95-125-150-200 gpm (115-230-360-475-570-750 LPM)

100 psi (7 BAR)

Settings: 30-60-95-125-150-200 gpm (115-230-360-475-570-750 LPM)



High-Range 2.5" Free Swivel Inlet/1-3/8" Waterway

Flow Rates:

75 psi (5 BAR)

Settings: 125-150-200-250 gpm (475-570-750-950 LPM)

100 psi (7 BAR)

Settings: 125-150-200-250 gpm (475-570-750-950 LPM)



SPECIFY WHEN ORDERING:

- Flow rate and pressure
- Bumper, bale handle, and pistol grip insert color (red standard)
- Spinning stainless steel metal teeth (standard) or fixed molded urethane teeth
- Inlet threads

SEE CUSTOMIZATION OPTIONS ON PAGES 21-22
CONFIGURE YOURS AT XDCONFIGURATOR.COM

NOZZLE OPTIONS

FOG NOZZLE XD™ COLORS

Choose bumper color, bale insert, and pistol grip insert color (orange is standard on Chief XD, yellow is standard on Select-O-Matic XD, and red is standard on Phantom XD)



Orange



Red



Yellow



Glow



Tan



Pink



Green



Blue



Black



White



Gray



Purple

CUSTOM LASER ETCHING



No upcharge for custom laser etching

TEETH

Choose from spinning stainless steel metal or fixed molded urethane teeth.



Spinning Stainless Steel (Standard)



Fixed Molded Urethane



SMOOTH BORE XD COLORS

Choose bumper color (black is standard on XD Smooth Bores)



Orange



Red



Yellow



Glow



Tan



Pink



Green



Blue



Black



White



Gray



Purple

INLET THREADS

No upcharge for customer specific inlet threads

- NHT (Standard)
- NPSH
- BSPP
- Others available. Please provide thread spec: ODM (Outside Diameter Male), TPI (Threads Per Inch), and Province/City. (Ex. 3.030 x 8 NYFDThread)

CONFIGURE YOURS AT
XDconfigurator.com

FORESTRY & WILDLAND

Not your "throw away" type nozzles, our rugged wildland products are built to perform season-after-season for your engine crew. They are built of lightweight aluminum, and the pattern can be selected with a quick action twist.

MYSTERY

TWIST SHUTOFF TIPS

The Mystery® Nozzle incorporates a twist-type shutoff, opening in straight stream and producing a variable flow from straight stream to wide fog with low pressure options available. Paired with an XD™ shutoff, the Mystery nozzle tip offers an extremely convenient method of advancing hose lines, particularly in the wildland / urban interface in progressive hose lay operations. Simply close the shutoff, remove the Mystery tip, attach additional hose, and then reattach the tip at the end of the line. The tip's built-in shutoff allows for the line to be advanced rapidly without the need for an additional nozzle.



L-205-BA 1.5" Rigid Inlet

Flow Rates:

125 gpm @ 75 psi
(475 LPM @ 5 BAR)

60 gpm @ 100 psi
(230 LPM @ 7 BAR)

95 gpm @ 100 psi
(360 LPM @ 7 BAR)

125 gpm @ 100 psi
(475 LPM @ 7 BAR)



PAIRS WITH MID-LOW XD SHUTOFF



ST-180-XD-F

- 1.5" Inlet / 6.5" (165mm) Length
- Available discharge sizes: 1/2" and 3/8"



XD-205-BAF 1.5" Rigid Inlet

- Dual flow nozzle design
- 30 gpm & 80 gpm @ 75 psi (115 LPM & 300 LPM @ 5 BAR)
- High visibility reflective striping

S-205-BAF 1.0" or 0.75" GHT Rigid Inlet

- Available in 12 gpm (45 LPM) or 23 gpm (90 LPM) single flow settings
- Twist shut-off
- For use with pressures up to 600 psi (40 BAR)



205-BA 1.5" Rigid Inlet

Flow Rates:

| | | |
|---|--|--|
| 200 gpm @ 50 psi (750 LPM @ 3.5 BAR) | 125 gpm @ 75 psi (475 LPM @ 5 BAR) | 170 gpm @ 100 psi (640 LPM @ 7 BAR) |
| 200 gpm @ 75 psi (750 LPM @ 5 BAR) | 250 gpm @ 100 psi (950 LPM @ 7 BAR) | |



D-205-BA 2.5" Rigid Inlet

Flow Rates:

| | | |
|---|--|--|
| 200 gpm @ 50 psi (750 LPM @ 3.5 BAR) | 125 gpm @ 75 psi (475 LPM @ 5 BAR) | 170 gpm @ 100 psi (640 LPM @ 7 BAR) |
| 200 gpm @ 75 psi (750 LPM @ 5 BAR) | 250 gpm @ 100 psi (950 LPM @ 7 BAR) | |

SPECIAL USE NOZZLES







FLOOR BELOW NOZZLE

MODEL FBN The Floor Below Nozzle has been specifically designed for fighting fires in high-rise buildings from the floor below at an effective angle and flow rate. It is not uncommon to experience wind driven and high heat conditions in high-rise building fires that can challenge conventional tactics. The Floor Below Nozzle provides a field-tested solution allowing crews to flow water from the floor below. It comes in a two-piece design making transport to upper floors and storage easier.

KEY FEATURES:

- Built in 2.5" XD Shutoff
- 2.5" Swivel Inlet
- 1.5" Male Outlet
- Blue powder coat paint finish
- 101" (2.57m) long
- Attaching a 1-1/8" tip (sold separately) would allow flows of 265 gpm (1000 LPM) at 50 psi (3.5 BAR)

HORIZONTAL VOID NOZZLE

MODEL HVN Designed specifically for fighting challenging fires in horizontal voids such as attic spaces and cocklofts, the Horizontal Void Nozzle has been field-tested to be an effective tool for the job. It has a 1.5" swivel base that can be screwed on to an existing shutoff providing water flow to two opposing 90 degree nozzle tips.



KEY FEATURES:

- Extruded Seamless SCH 40 Aluminum 6061 Tube
- 1.5" Swivel Inlet
- (2) 1.5" Male Outlets
- Red powder coat paint finish
- 75" (1.91 m) long
- Recommended tip for this appliance is the Model ST-185-XD FDNY Stack with the ½" tip in place (sold separately)





BENT OVERHAUL TIP

MODEL BOT-XD The Elkhart Brass Bent Overhaul Tip is a pocket size 1/2" orifice 90 degree "bent tip" ideal for extinguishing pockets of fire in void spaces, shafts, attics, etc. Originally imagined by FDNY Chief George Bauer of the 16th Battalion and made by Iowa American in the early 90's, it was dubbed the "Bauer BentTip". This tip has been re-created with valuable current end user input through field testing.

KEY FEATURES:

- Fits the Model ST-185-XD FDNY Stack
- Small and compact ideal for carrying in your turnout gear pocket
- Flows 50 gpm @ 50 psi (190 LPM @ 3.5 BAR)
- Creates a powerful penetrating low flow stream ideal for overhaul operations



SOT-XD – STRAIGHT OVERHAUL TIP

- Flows 50 gpm @ 50 psi (190 LPM @ 3.5 BAR)
- Fits and comes with the Model ST-185-XD FDNY Stack
- Small and compact ideal for carrying in your turnout gear pocket
- Creates a powerful penetrating low flow stream ideal for overhaul operations



1575 – Multi-Purpose Fog Nozzle

- Ideal for a variety of purposes such as overhaul, hydraulic ventilation, or as a choke tip for reduced flow
- Durable, lightweight polycarbonate construction
- Rated for 95 gpm (360 LPM) and stream patterns from wide fog to straight stream
- 1.5" NHT female rigid inlet



XD™ WASHDOWN KIT

Simple and built to last, the XD Washdown Kit is the perfect addition needed for after-the-fire cleanup. It is ideal for cleaning up equipment, tools, dirty hose, or contaminated turnout gear. The high-quality components that make up this kit are far superior what you would find from a local hardware or big box store.

KIT INCLUDES:

- XD Washdown Nozzle built tougher than any other garden hose nozzle
- Model 104A swivel bell reducer to make attachment simple with no hose twisting
- 50' x 5/8" garden hose rated for pressures up to 300 psi equipped with brass couplings
- A rugged carrying bag with durable seat belt handles and vents to aid in drying after putting away wet

HELP REMOVE CONTAMINANTS



The XD Washdown Nozzle is made of lightweight aluminum with stainless steel and brass components which includes a trigger controlled variable spray pattern that instantly shuts off when trigger is released. Built for long term use, this is not your ordinary garden hose nozzle.

- Flows 7 pgm @ 100 psi (27 LPM @ 7 BAR)
- Equipped with an insulated rubber cover with red direction arrows ready to withstand the harshest use
- Brass swivel inlet adapter included to eliminate hose twists at the nozzle
- Rated for 150 psi (10 BAR) with brass couplings



222-1.5" Wat-R-Wall Water Curtain

- 100 gpm @ 100 psi (380 LPM @ 7 BAR)
- Chrome plated brass construction
- 1.5" female free swivel inlet



222-2.5" Wat-R-Wall Water Curtain

- 100 gpm @ 100 psi (380 LPM @ 7 BAR)
- Chrome plated brass construction
- 2.5" female free swivel inlet



Model LR Cellar Nozzle

- 160 gpm @ 100 psi (600 LPM @ 7 BAR)
- 20 ft. (6 meter) spray diameter
- Chrome plated brass construction
- 1.5" female rigid inlet

Model R Cellar Nozzle

- 350 gpm @ 100 psi (1330 LPM @ 7 BAR)
- 55 ft. (16.7 m) spray diameter
- Chrome plated brass construction
- 2.5" female rigid inlet



193-6-1.5" Bresnan Distributor Nozzle

- 140 gpm @ 100 psi (530 LPM @ 7 BAR)
- 20 ft. (6 m) spray diameter
- Chrome plated brass construction
- 1.5" female rigid inlet

193-6-2.5" Bresnan Distributor Nozzle

- 395 gpm @ 100 psi (1495 LPM @ 7 BAR)
- 45 ft. (13.7 m) spray diameter
- Chrome plated brass construction
- 2.5" female rigid inlet



193-9-2.5" Bresnan Distributor Nozzle

- 495 gpm @ 100 psi (1875 LPM @ 7 BAR)
- 36 ft. (10.9 m) spray diameter
- Chrome plated brass construction
- 2.5" female rigid inlet

A-1.5" Applicator

- For use with Cellar and Distributor Nozzles
- Chrome plated brass construction
- 1.5" free swivel inlet x 1.5" male outlet



A-2.5" Applicator

- For use with Cellar and Distributor Nozzles
- Lightweight aluminum construction
- Red urethane enamel finish
- 2.5" free swivel inlet x 2.5" male outlet



XD™ FOAM TUBES

When greater foam expansion rates are needed, our line of XD™ Foam Tubes Steps in. Light-weight and quick to attached and detach.

- Composite and aluminum construction for the perfect balance of weight and durability
- Large air inlets and hydro-verter screen built in for the optimum quality finished foam

Mid Range XD Foam Tube

FITS: Mid/Low and Mid Range XD Fog Nozzles

High Range XD Foam Tube

FITS: High Range XD Fog Nozzles

FOAM EDUCTORS

BY-PASS STYLE

- Simple, Efficient Venturi Design
- By-pass allows for water only at lower inlet pressures
- Positive setting metering valve proportioning settings of ½%, 1%, 3%, 6%
- 2.5" or 1.5" female swivel inlet x 1.5" male outlet
- Rugged, corrosion resistant brass construction
- Red urethane enamel and chrome plated finish trim

240-60

- Rated to flow 60 gpm at 200 psi (230 LPM @ 14 BAR) inlet pressure

240-95

- Rated to flow 95 gpm at 200 psi (360 LPM @ 14 BAR) inlet pressure

240-125

- Rated to flow 125 gpm at 200 psi (475 LPM @ 14 BAR) inlet pressure



INLINE STYLE

- Simple, Efficient Venturi Design
- Positive setting metering valve proportioning settings of ½%, 1%, 3%, 6%
- 2.5" or 1.5" female swivel inlet x 1.5" male outlet
- Rugged, corrosion resistant brass construction
- Red urethane enamel and satin brass trim finish (chrome plated brass trim optional)

241-60

- Rated to flow 60 gpm at 200 psi (230 LPM @ 14 BAR) inlet pressure

241-95

- Rated to flow 95 gpm at 200 psi (360 LPM @ 14 BAR) inlet pressure

241-125

- Rated to flow 125 gpm at 200 psi (475 LPM @ 14 BAR) inlet pressure

241-150

- Rated to flow 150 gpm at 200 psi (570 LPM @ 14 BAR) inlet pressure

241-250

- Rated to flow 250 gpm at 200 psi (750 LPM @ 14 BAR) inlet pressure
- Available with 2.5" inlet only

241-30

- Rated to flow 30 gpm at 200 psi (115 LPM @ 14 BAR) inlet pressure
- Infinite setting metering valve from 0% to 6%
- 1.0" -OR- 1.5" female swivel inlet x 1.0" male outlet
- Red urethane enamel and chrome plated finish trim





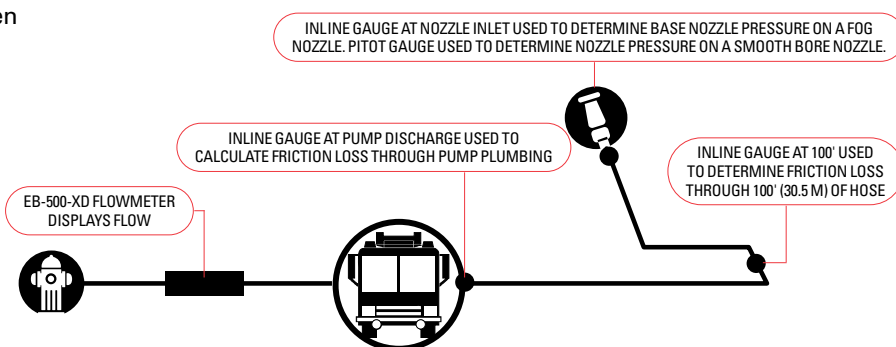
EB-500-XD PORTABLE FLOW METER

The EB-500-XD portable flowmeter changes the game when it comes to accurate and effective flow testing. The flow tube, paddlewheel, digital readout, and battery are all self-contained making this unit extremely compact. The waterway features a unique internal waterway shape ensuring laminar flow for consistently accurate readings up to 500 gpm (1900 LPM). The flow pickup is a paddlewheel design which is located further into the middle of the waterway increasing reliability of the flow readings. The field programmable unit contains an internal rechargeable battery with visible status lights letting you know when the unit is low on power and when it is fully charged. The unit also features a totalizer function letting you know the total amount of water flowed. With the attached carrying handle and weighing only 8.4 lbs (3.8 kg), the EB-500-XD truly maximizes portability.

EB-500-XD PORTABLE FLOW METER

KEY FEATURES:

- Single self-contained unit as opposed to multi-component designs
- Unique internal waterway shape ensures laminar flow and accurate readings up to 500 gpm (1900 LPM)
- Large numerical digital readout
- Flow is read through a paddlewheel located deeper into the middle of the waterway for reliable readings
- Contains internal rechargeable battery with status lights with battery life up to 8 hours
- Totalizer function letting you know the total amount of water flowed
- Simple field calibration procedure when required
- NEMA 4 Waterproof Rating
- Hard case for storage



NFPA 1962 FLOW TEST KIT

The Elkhart Brass Flow Test Kit includes all essential components needed to accurately determine fire flows, friction losses, and pump discharge pressures. It is necessary equipment for conducting your NFPA 1962 flow test of nozzles, hose, and appliances, as well as comprehensive hose and nozzle training.

KIT INCLUDES:

- One EB-500-XD Portable Flowmeter
- One Digital Handheld Pitot Gauge
- Three Model 228A 1.5" Line Gauges
- Three Model 228A 2.5" Line Gauges
- One Carrying Case



FLOW TESTING ESSENTIALS

Digital Handheld Pitot Gauge

- Ideal for determining nozzle pressure for smooth bore tips
- Accurately read pressure from 0-300 psi (0-20 BAR) down to the tenth psi
- Gauge features a back lit display and protective rubber boot
- Durable pitot blade
- Includes carrying case



228A-1.5" Inline Pressure Gauge

- 0-200 psi (0-13.78 BAR) fully guarded, shock resistant air-filled gauge
- Phosphorescent gauge face assists viewing in low light conditions.
- Protective gauge face cover included
- Lightweight cast aluminum
- Free swivel inlet allow movement
- 1.5" female swivel inlet x 1.5" male outlet



228A-2.5" Inline Pressure Gauge

- 0-200 psi (0-13.78 BAR) fully guarded, shock resistant air-filled gauge
- Phosphorescent gauge face assists viewing in low light conditions
- Protective gauge face cover included
- Lightweight cast aluminum
- Free swivel inlet allow movement
- 2.5" female swivel inlet x 2.5" male outlet



227A-1.5" Piezometer Gauge

- 0-300 psi (0-20 BAR) liquid-filled gauge
- Multiple internal ports balance pressure reading
- Lightweight hard coated aluminum
- 1.5" female swivel inlet x 1.5" male outlet



227A-2.5" Piezometer Gauge

- 0-300 psi (0-20 BAR) liquid-filled gauge
- Multiple internal ports balance pressure reading
- Lightweight hard coated aluminum
- 2.5" female swivel inlet x 2.5" male outlet





HOW TO MEASURE
INLINE GAUGE AND
PIEZOMETER



HOW TO MEASURE
NOZZLE PRESSURE

STANDPIPE ESSENTIALS



THE ELKHART STANDPIPE BAG

- Custom designed specifically for standpipe operations
- Features several internal and external pockets ideal for door chocks, pipe wrenches, wire brushes, adapters, etc.
- Handles made of seat belt webbing with seat belt buckle fasteners
- Bag made of durable materials

THE KIT INCLUDES:

- (1) Standpipe Bag
- 17" L x 9" W x 9" H
(432 mm L x 229 mm W x 229 mm H)
- (1) 228A Pressure Gauge
- (1) 105A Elbow
- (1) X-86A Gate Valve
- (2) T-464 Spanner Wrenches



DIGITAL



DIGITAL SET UP

ANALOG



ANALOG SET UP

228A-2.5" Inline Pressure Gauge

- 0-200 psi (0-13.78 BAR) fully guarded, shock resistant air-filled gauge
- Phosphorescent gauge face assists viewing in low light conditions
- Protective gauge face cover included
- Lightweight cast aluminum
- Free swivel inlet allow movement
- 2.5" female swivel inlet x 2.5" male outlet



105A Drain Elbow

- 45 degree design reduces hose kinks
- Built in drain works in any position
- Lightweight aluminum
- Free swivel inlet allows movement
- 2.5" female swivel inlet x 2.5" male outlet



X86A Gate Valve

- Puts valve control in the hands of fire attack teams
- Gate style valve function for easy adjustment for proper flow and pressure
- Rated to 300 psi (21 BAR)
- Lightweight aluminum
- 2.5" female swivel inlet x 2.5" male outlet



555A Standpipe Flowmeter

- Accurate digital readout of flow and pressure up to 250 gpm / 250 psi (946 LPM / 17.23 BAR)
- Rechargeable 9V battery powered
- 5 hours use per charge with low battery indication and standby mode
- Lightweight aluminum
- 2.5" female swivel inlet x 2.5" male outlet



111A Increaser

- 1.5" female inlet x 2.5" male outlet
- Ideal for extend operations
- Low profile knurling
- Durable lightweight aluminum





RAM XD™

RAPID ATTACK PORTABLE MONITOR: Ideal for quick attack, high-rise, and industrial applications, the RAM XD™ Rapid Attack Portable Monitor can be easily deployed by a single firefighter to flow up to 500 gpm (1900 LPM) fast! Lightweight and compact, the RAM XD can lower down to 14 degrees above horizontal making it easy to flow into overhead doors, traditional size man doors, or store fronts. Its angled waterway shape and four foldout legs help to harness nozzle reaction making an extremely stable and safe design. It delivers the best stream quality and reach at only 75 psi (5 BAR) nozzle pressure. Lock pin holds valve in closed position preventing accidental opening while moving the unit on a charged hose line. A safety strap is attached along with a storage pouch.

8296 R.A.M. (RAPID ATTACK MONITOR) XD

- Lightweight, compact monitor easily deployed by single firefighter
- Up-down travel range: Vertical +14 degrees to +51 degrees (manned) +35 degrees to plus 51 degrees (unmanned) Left-Right travel 20 degrees each way (40 degrees total)
- Only 9 psi (0.6 BAR) friction loss at 500 gpm (1900 LPM)
- 2.5" female swivel inlet x 2.5" male outlet

RAM XD NOZZLES & ACCESSORIES



3896 R.A.N. Nozzle (Rapid Attack Nozzle)

- Rated for 500 gpm @ 75 psi (1900 LPM @ 5 BAR)
- Built in stream shaper for incredible reach and stream quality
- Hard coated aluminum finish
- 2.5" female swivel inlet

181-A Deluge Tip

- 1-3/8" Discharge Size
- Rated for 500 gpm @ 80 psi (1900 LPM @ 5.5 BAR)
- Hard coated aluminum finish
- 2.5" female inlet



3895 Selectable Flow R.A.N. Nozzle (Rapid Attack Nozzle)

- Selectable flow rates: 500 gpm (1900 LPM), 350 gpm (1330), and 250 (950 LPM) gpm at 75 psi (5 BAR)
- Built in stream shaper for incredible reach and stream quality
- Hard coated aluminum finish
- 2.5" female swivel inlet

ST-197A Triple Stacked Tip

- Discharges sizes of 1" / 1-1/4" / 1-1/2"
- Rated for 265 gpm / 413 gpm / 596 gpm @ 80 psi (1000 LPM / 1560 LPM / 2250 LPM @ 5.5 BAR)
- Hard coated aluminum finish
- 2.5" female inlet



282-A Mini Stream Shaper

- Compact design
- Internal vanes help reduce turbulence improving stream reach and quality
- Hard coated aluminum finish
- 2.5" female inlet x 2.5" male outlet



8296-MB Mounting Bracket

- Constructed of rugged aluminum
- Durable rubber straps used for positive securing
- Suitable for use inside or outside apparatus
- Large locking levers easy to manipulate



Oscillating R.A.N. Nozzle (Rapid Attack Nozzle)

- Rated for 500 gpm @ 75 psi (1900 LPM @ 5 BAR)
- Water powered adjustable oscillation Left-Right travel 20 degrees each way (40 degrees total)
- Built in stream shaper for incredible reach and stream quality
- 2.5" female swivel inlet



HF-350A / HF-500A Hydrofoam Nozzle

- Rated for 350 gpm (1330 LPM) or 500 gpm @ 100 psi (1900 LPM @ 7 BAR)
- Cast aluminum self educting foam nozzle design supplied with pick up tube
- Pick up rates: 1/2%, 1%, 3%, 6% (HF-350A) 1/2%, 1%, 3%, (HF-500A)
- 2.5" female swivel inlet





STINGER 2.0

STINGER® 2.0 DUAL PURPOSE MONITOR: Stinger 2.0 is a dual-purpose, break-apart monitor for use as a deck gun or portable monitor. Numerous truck adapter and portable base options are available to suit every need. In portable mode, five forged aluminum legs with self-adjusting, carbide-tipped ground spikes increase stability. The lightweight Stinger 2.0 is the most flow-efficient in its class with a friction loss reducing 3-3/8" vaned waterway. Other features include a by-passable safety stop at 35° above horizontal, a patented monitor to base latching mechanism that provides visual indication of status, rotation lock mechanism which provides positive left/right lock with visual indication, a fully enclosed stainless steel worm gear, a liquid-filled pressure gauge, safety strap attached with storage pouch, and a carrying handle.

KEY FEATURES:

- Rated for 1250 gpm (4750 LPM) flow rate / 1000 gpm (3800 LPM) with (2-2.5" portable base)
- Up-down travel range:

PORTABLE MODE:

- Vertical +35° to +75° (40°)
- Horizontal L45° to R45° (90°)

DECK MODE:

- Vertical -15° to +75° (95°)
- Horizontal 360° Continuous
- Lightweight aluminum construction
- Red urethane enamel finish
- 2.5" male outlet

PORTABLE MODE MODELS

8297-25 – Upper Unit and Portable Ground Base

2 x 2.5" Swivel Inlet 1000 gpm (3800 LPM) Flow Rating

8297-35 – Upper Unit and Portable Ground Base

1 x 3.5" Swivel Inlet 1250 gpm (4750 LPM) Flow Rating

8297-40 – Upper Unit and Portable Ground Base

1 x 4.0" Swivel Inlet 1250 gpm (4750 LPM) Flow Rating

8297-41 – Upper Unit and Portable Ground Base

1 x 4.0" Storz Inlet 1250 gpm (4750 LPM) Flow Rating

8297-45 – Upper Unit and Portable Ground Base

1 x 4.5" Swivel Inlet 1250 gpm (4750 LPM) Flow Rating

8297-51 – Upper Unit and Portable Ground Base

1 x 5.0" Storz Inlet 1250 gpm (4750 LPM) Flow Rating

Model ST-194A Quad Stacked Tips and 282A Shaper included with each model



DECK MODE MODELS

8297-98P – Upper Unit and Top Mount Adapter

3" Female NPT Top Mount Adapter 1250 gpm (4750 LPM) Flow Rating

8297-98F – Upper Unit and Top Mount Adapter

3" Flange Top Mount Adapter 1250 gpm (4750 LPM) Flow Rating

8297-99 – Upper Unit and Top Mount Adapter

w/ 8299 2 x 2.5" Top Mount Adapter 1000 gpm (3800 LPM) Flow Rating

Model ST-194A Quad Stacked Tips and 282A Shaper included with each mode



STINGER 2.0 BASES

Portable Mode Stand Alone Portable Bases

2 x 2.5" Swivel Inlet 1000 gpm (3800 LPM) Flow Rating

1 x 3.5" Swivel Inlet 1250 gpm (4750 LPM) Flow Rating

1 x 4.0" Swivel Inlet 1250 gpm (4750 LPM) Flow Rating

1 x 4.0" Storz Inlet 1250 gpm (4750 LPM) Flow Rating

1 x 4.5" Swivel Inlet 1250 gpm (4750 LPM) Flow Rating

1 x 5.0" Storz Inlet 1250 gpm (4750 LPM) Flow Rating





STINGER 2.0 NOZZLES & ACCESSORIES

ST-194A Quad Stacked Tip

- Discharges sizes of 1-3/8" / 1-1/2" / 1-3/4" / 2"
- Rated for 502 gpm / 597 gpm / 813 gpm / 1062 gpm @ 80 psi (1900 LPM / 2260 LPM / 3080 LPM / 4020 LPM @ 5.5 BAR)
- Hard coated aluminum finish
- 2.5" female rigid inlet



ST-191A Triple Stacked Tip

- Discharges sizes of 1-3/8" / 1-1/2" / 1-3/4" / 2"
- Rated for 597 gpm / 813 gpm / 1062 gpm @ 80 psi (2260 LPM / 3080 LPM / 4020 LPM @ 5.5 BAR)
- Hard coated aluminum finish
- 2.5" female swivel inlet



282-A Stream Shaper

- Compact design
- Internal vanes help reduce turbulence improving stream reach and quality
- Hard coated aluminum finish
- 2.5" female inlet x 2.5" male outlet



SM-1250 Master Stream Nozzle

- Automatic design to maximize reach and stream velocity based on available water supply
- Flow range of 350-1250 gpm @ 75 psi (1330-4750 LPM @ 5 BAR)
- Hard coated aluminum finish
- 2.5" female inlet



DECK MODE STAND ALONE TOP MOUNT ADAPTERS



8298P 2.0
3" Female NPT
Top Mount Adapter



8298F 2.0
3" Female NPT
Top Mount Adapter



8299 Deck Mount Adapter
2 x 2.5" Swivel Inlet
Top Mount Adapter

8297 MB Portable Base Mounting Bracket

- Truck storage mounting bracket for Stinger® 2.0 portable base or complete monitor



8298-EX The Pipe™ Manual Extender

- Increases the height of deck mounted Stinger 2.0 by 18" (457 mm)

8298-EX MB Storage Bracket The Pipe Manual Extender

- Truck storage mounting bracket for 8298-EX The Pipe Manual Extender



PN 81258001 Caution Light

- For use with The Pipe—visual confirmation that The Pipe is attached

PN 81460001 Anchor Kit

- Includes stake, mallet and carrying bag for securing portable base



PN 81315001 Companion Flange Kit

- 3" 150# ANSI steel flange with bolts and gasket



PN 814978001 Protective Cover for Base

- A shaped polymer covering for deck-mounted or portable-mounted bases, designed to protect the swivel bearing and/or ring gear. Attached tether for securing the cover



APPLIANCES



GATE VALVES

X86A Gate Valve

- 2.5" female swivel inlet x 2.5" male outlet
- Gate style valve function for easy adjustment for proper flow and pressure
- Rated to 300 psi (21 BAR)
- Lightweight aluminum
- Finish red urethane enamel with hard anodized trim

X86 Gate Valve

- 2.5" female swivel inlet x 2.5" male outlet
- Gate style valve function for easy adjustment for proper flow and pressure
- Rated to 300 psi (21 BAR)
- Rugged brass construction
- Finish red urethane enamel
- Specify: satin brass or chrome plated trim



B96A Ball Valve

- 2.5" female swivel inlet x 2.5" male outlet
- Durable, lightweight aluminum construction
- Acetal valve ball with adjustable neoprene seats
- Positive twist lock handle
- Finish red urethane enamel with hard anodized trim

GATED WYES NOTE: Product numbers ending in "A" indicates Aluminum vs. Brass

- Acetal valve balls with adjustable neoprene seats
- Rugged aluminum handles

B-100-SA

Specify Inlet/Outlet Configuration:

- 1.0" female swivel inlet x (2) 0.75" male outlet
- (1) 1.5" female swivel inlet x (2) 0.75" male outlet
- (1) 1.5" female swivel inlet x (2) 1.0" male outlet
- Durable, lightweight aluminum construction
- Finish red urethane enamel with hard anodized trim



B-100-LA

- (1) 1.5" female swivel inlet x (2) 1.5" male outlet
- Durable, lightweight aluminum construction
- Finish red urethane enamel with hard anodized trim



B-100-LA

B-100-L

- (1) 1.5" female swivel inlet x (2) 1.5" male outlet
- Rugged brass construction
- Finish red urethane enamel with chrome plated trim

B-100A

- (1) 2.5" female swivel inlet x (2) 1.5" male outlet
- Durable, lightweight aluminum construction
- Finish red urethane enamel with hard anodized trim



B-100

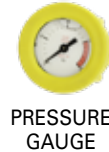
- (1) 2.5" female swivel inlet x (2) 1.5" male outlet
- Rugged brass construction
- Finish red urethane enamel with satin brass or chrome plated trim



shown with optional knob handles

HANDLE OPTIONS

- Not all handles available on all models
- All twist-locks feature metal knurled knobs



B-97A

Specify Inlet/Outlet Configuration:

- (1) 2.5" female swivel inlet x (2) 2.5" male outlet
- (1) 3.5" female swivel inlet x (2) 2.5" male outlet
- (1) 4.0" female swivel inlet x (2) 2.5" male outlet
- (1) 4.0" Storz inlet x (2) 2.5" male outlet
- (1) 4.5" female swivel inlet x (2) 2.5" male outlet
- (1) 5.0" Storz inlet x (2) 2.5" male outlet
- (1) 5.0" female swivel inlet x (2) 2.5" male outlet
- (1) 6.0" female swivel inlet x (2) 2.5" male outlet
- Positive Twist Lock Handles
- Durable, lightweight aluminum construction
- Finish red urethane enamel with hard anodized trim



B-97A

B-97

Specify Inlet/Outlet Configuration:

- (1) 2.5" female swivel inlet x (2) 2.5" male outlet
- (1) 3.5" female swivel inlet x (2) 2.5" male outlet
- (1) 4.0" female swivel inlet x (2) 2.5" male outlet
- (1) 4.5" female swivel inlet x (2) 2.5" male outlet
- (1) 5.0" female swivel inlet x (2) 2.5" male outlet
- (1) 6.0" female swivel inlet x (2) 2.5" male outlet
- Positive Twist Lock Handles
- Rugged brass construction
- Finish red urethane enamel with chrome plated trim

PLAIN WYES

Model 1A

Specify Inlet/Outlet Configuration:

- (1) 2.5" female swivel inlet x (2) 1.5" male outlet
- (1) 2.5" female swivel inlet x (2) 2.5" male outlet
- (1) 4.5" female swivel inlet x (2) 2.5" male outlet
- Durable, lightweight aluminum construction
- Finish red urethane enamel with hard anodized trim



Model 1

Specify Inlet/Outlet Configuration:

- (1) 2.5" female swivel inlet x (2) 2.5" male outlet
- (1) 4.5" female swivel inlet x (2) 2.5" male outlet
- Rugged brass construction
- Finish red urethane enamel with chrome plated trim



VALVED SIAMESE**B-98A**

Specify Inlet/Outlet Configuration:

- (2) 2.5" female swivel inlet x (1) 2.5" female swivel outlet
- (2) 2.5" female swivel inlet x (1) 4.0" female swivel outlet
- (2) 2.5" female swivel inlet x (1) 4.5" female swivel outlet
- (2) 2.5" female swivel inlet x (1) 5.0" female swivel outlet
- (2) 2.5" female swivel inlet x (1) 6.0" female swivel outlet
- Acetal valve balls with adjustable neoprene seats
- Positive Twist Lock Handles
- Durable, lightweight aluminum construction
- Finish red urethane enamel with hard anodized trim

**B-99A**

Specify Inlet/Outlet Configuration:

- (3) 2.5" female swivel inlet x (1) 2.5" female swivel outlet
- 3) 2.5" female swivel inlet x (1) 4.0" female swivel outlet
- (3) 2.5" female swivel inlet x (1) 5.0" female swivel outlet
- (3) 2.5" female swivel inlet x (1) 6.0" female swivel outlet
- Acetal valve balls with adjustable neoprene seats
- Positive Twist Lock Handles
- Durable, lightweight aluminum construction
- Finish red urethane enamel with hard anodized trim

**9722**

Specify Inlet/Outlet Configuration:

- (2) 2.5" female swivel inlet x (1) 4.0" Storz outlet
- (2) 2.5" female swivel inlet x (1) 5.0" Storz outlet
- Built in adjustable pressure relief valve
- Acetal valve balls with adjustable neoprene seats
- Self-Locking valve handles
- Durable, lightweight aluminum construction
- Finish red urethane enamel with hard anodized trim



9723

Specify Inlet/Outlet Configuration:

- (3) 2.5" female swivel inlet x (1) 4.0" Storz outlet
- (3) 2.5" female swivel inlet x (1) 5.0" Storz outlet
- Built in adjustable pressure relief valve
- Acetal valve balls with adjustable neoprene seats
- Self-Locking valve handles
- Durable, lightweight aluminum construction
- Finish red urethane enamel with hard anodized trim



PLAIN SIAMESE

Model 2A

Specify Inlet/Outlet Configuration:

- (2) 2.5" female swivel inlet x (1) 2.5" male outlet
- (2) 2.5" female swivel inlet x (1) 3.0" male outlet
- (2) 2.5" female swivel inlet x (1) 4.0" male outlet
- Durable, lightweight aluminum construction
- Finish red urethane enamel with hard anodized trim



Model 2

Specify Inlet/Outlet Configuration:

- (2) 1.5" female swivel inlet x (1) 1.5" male outlet
- (2) 1.5" female swivel inlet x (1) 2.5" male outlet
- (2) 2.5" female swivel inlet x (2) 2.5" male outlet
- (2) 2.5" female swivel inlet x (2) 3.0" male outlet
- (2) 2.5" female swivel inlet x (2) 4.0" male outlet
- Rugged brass construction
- Finish red urethane enamel with chrome plated trim



CLAPPERED SIAMESE

Model 4A

Specify Inlet/Outlet Configuration:

- (2) 2.5" female swivel inlet x (1) 2.5" male outlet
- (2) 2.5" female swivel inlet x (1) 3.0" male outlet
- (2) 2.5" female swivel inlet x (1) 4.0" Storz outlet
- (2) 2.5" female swivel inlet x (1) 5.0" Storz outlet
- Single swinging clappered siamese design
- Leather carrying handle
- Built in 0.75" drain valve
- Durable, lightweight aluminum construction
- Finish red urethane enamel with hard anodized trim



Model 4

Specify Inlet/Outlet Configuration:

- (2) 2.5" female swivel inlet x (1) 2.5" male outlet
- (2) 2.5" female swivel inlet x (1) 3.0" male outlet
- Single swinging clappered siamese design
- Leather carrying handle
- Built in 0.75" drain valve
- Rugged brass construction
- Finish red urethane enamel with chrome plated trim



9702

Specify Inlet/Outlet Configuration:

- (2) 2.5" female swivel inlet x (1) 4.0" Storz outlet
- (2) 2.5" female swivel inlet x (1) 5.0" Storz outlet
- Independent spring loaded clappered siamese design
- Built in adjustable pressure relief valve
- Built in 0.75" drain valve
- Durable, lightweight aluminum construction
- Finish red urethane enamel with hard anodized trim



9703

Specify Inlet/Outlet Configuration:

- (3) 2.5" female swivel inlet x (1) 4.0" Storz outlet
- (3) 2.5" female swivel inlet x (1) 5.0" Storz outlet
- Independent spring loaded clappered siamese design
- Built in adjustable pressure relief valve
- Built in 0.75" drain valve
- Durable, lightweight aluminum construction
- Finish red urethane enamel with hard anodized trim



WATER THIEFS

BG-104A

- (1) 2.5" female swivel inlet x (1) 2.5" male outlet and (2) 1.5" male outlets
- Acetal valve balls with adjustable neoprene seats
- Rugged aluminum handles
- Durable, lightweight aluminum construction
- Finish red urethane enamel with hard anodized trim



BG-104-A

BG-104

- (1) 2.5" female swivel inlet x (1) 2.5" male outlet and (2) 1.5" male outlets
- Acetal valve balls with adjustable neoprene seats
- Rugged aluminum handles
- Rugged brass construction
- Finish red urethane enamel
- Specify: satin brass or chrome plated trim

9743

Specify Inlet/Outlet Configuration:

- (1) 4.0" Storz inlet x (1) 4.0" Storz outlet and (2) 2.5" male outlets
- (1) 5.0" Storz inlet x (1) 5.0" Storz outlet and (2) 2.5" male outlets
- Built in adjustable pressure relief valve
- Acetal valve balls with adjustable neoprene seats
- Open/Close handwheel for LDH outlet
- Self-locking quarter turn valve handles for 2.5" outlets
- Durable, lightweight aluminum construction
- Finish red urethane enamel with hard anodized trim



9843

Specify Inlet/Outlet Configuration:

- (1) 4.0" Storz inlet x (1) 4.0" Storz outlet and (2) 2.5" male outlets
- (1) 5.0" Storz inlet x (1) 5.0" Storz outlet and (2) 2.5" male outlets
- Built in adjustable pressure relief valve
- Acetal valve balls with adjustable neoprene seats
- Open/Close handwheel for LDH outlet
- Gate valve style 2.5" outlets
- Durable, lightweight aluminum construction
- Finish red urethane enamel with hard anodized trim



REDUCERS

101A Swiveling Plate Reducer

- 2.5" female swivel inlet x 1.5" male outlet
- Low profile knurling
- Durable lightweight aluminum



A-327A Plate Reducer

- 2.5" female rigid inlet x 1.5" male outlet
- Rocker lug style
- Durable lightweight aluminum



102A Swiveling Bell Reducer

- 2.5" female swivel inlet x 1.5" male outlet
- Low profile knurling
- Durable lightweight aluminum



D-327A Bell Reducer

- 2.5" female rigid inlet x 1.5" male outlet
- Rocker lug style
- Durable lightweight aluminum



104A Swiveling Bell Reducer

- 1.5" female swivel inlet x Garden Hose Thread (GHT) male outlet
- Low profile knurling
- Durable lightweight aluminum



WRENCHES

T-464 Folding Spanner Wrench

- Used for tightening or loosening hose couplings up to 3.5" equipped with either rocker lugs or pin lugs
- Features gas shutoff slot, hammer head, pry end, and hanger loop
- Durable lightweight aluminum
- Cast aluminum finish



F-464A Folding Spanner Wrench

- Used for tightening or loosening hose couplings up to 3.5" equipped with either rocker lugs or pin lugs
- Folds in half for a perfect pocket fit
- Features pry end and clip ring
- Durable lightweight aluminum
- Cast aluminum finish



F-464B Folding Spanner Wrench

- Used for tightening or loosening hose couplings up to 3.5" equipped with either rocker lugs or pin lugs
- Folds in half for a perfect pocket fit
- Features pry end and clip ring
- Rugged brass construction
- Cast brass finish



S-454 Adjustable Hydrant Wrench

- Adjustable to fit up to a 1.75" pentagon nut or 1.5" square nut on fire hydrants
- Can be used as a spanner wrench on 2.5" pin lug couplings or on rocker lug couplings from 2.5" up to 5.0"
- Wrench head is made of rugged, cast manganese bronze, with a knurled chrome plated steel handle



S-454-S Adjustable Hydrant Wrench

- Adjustable to fit up to a 1.75" pentagon nut or 1.5" square nut on fire hydrants
- Can be used as a spanner wrench on 4.0" or 5.0" Storz couplings or on rocker lug couplings from 2.5" up to 5.0"
- Wrench head is made of rugged, cast manganese bronze, with a knurled chrome plated steel handle



MORE INFORMATION



FIELD KITS

Elkhart Brass offers field service kits for nozzles, valves and appliances. These kits include information on repairs, parts and service. Learn more at elkhartbrass.com or contact a representative today.

TECHNICAL DATA

Available on our website in Technical Data section or by contacting Elkhart Brass direct, find multimedia and other valuable resources for reach, friction loss, flow and performance data, and much more.

MANUALS

Elkhart Brass and its products are supported through comprehensive manuals for most categories. Find downloads at elkhartbrass.com with all of the product information you should need.

SPECIFICATIONS

Downloadable, printable specifications sheets are available for most products at the Elkhart Brass website. You will find tips, sizes, materials used, certain operational instructions, and more.

XD™ CONFIGURATOR

The popular XD™ Series nozzle line features a convenient web-based configurator. Customers can visit xdconfigurator.com (access through the Elkhart Brass website) and build their own to exact needs.

SEE CUSTOMIZATION OPTIONS ON PAGES 21-22
CONFIGURE YOURS AT XDCONFIGURATOR.COM

HOW TO ORDER

Sales Managers are listed by your location on our website. This includes The United States, Canada, Mexico, Europe, Africa, Asia, and more. They will assist with information or ordering and will also provide demos of products by request and availability.

ABOUT SAFE FLEET®

In 2015, Elkhart Brass was acquired by Safe Fleet. The corporation's portfolio of brands serves major markets including Emergency, Military, Industrial, Work Truck, Waste, Truck/Trailer, and Bus/Rail/RV. The combination of Elkhart Brass with FRC, FoamPro and ROM enables the company to develop integrated systems of monitors, valves, foam proportioning and electronic controls for the global emergency market. Headquartered in Belton, MO, Safe Fleet employs over 1000 employees. The Safe Fleet family of brands operates over 500,000 square feet of manufacturing space and targets markets with increasing demand for operator, passenger and pedestrian safety. For more information about Safe Fleet you can visit www.safefleet.net.

OTHER MARKETS WE SERVE

Elkhart Brass has for decades, even over a century with some, served the firefighting equipment and fire protection markets. These include OEM vehicle builders, municipalities throughout the world, industrial customers like mining and construction segments, and building interior safety systems.



SAFE FLEET

Driving Safety Forward™





TAKE ACTION elkhartbrass.com

Since 1902 Elkhart Brass has been an innovator in the fire protection and firefighting equipment industries. Today, with well over 2,000 products, the company has become a leader in the various markets served. Find out more by visiting the elkhartbrass.com website, social media channels, Knowledge Drop and other training, educational and product videos; and see more details. There are many resources available to help you find and enjoy the right product solution at Elkhart Brass.



ELKHART BRASS

A Safe Fleet Brand

1302 W Beardsley Ave
Elkhart, IN 46514
(574) 295-8330

Follow us on all of these social media channels for the latest information about Elkhart Brass products.



For official Elkhart Brass merchandise visit our store at www.elkhartbrass.shop





ELKHART  BRASS

07-2021

Copyright ©2021 Safe Fleet and its subsidiaries. All rights reserved. No part of this publication may be reproduced by any means without written permission from Safe Fleet. The information in this publication is believed to be accurate. However, Safe Fleet does not make any representation or warranty to that effect and does not assume responsibility for any consequences resulting from use of such information. Revisions or new editions of the publication may be issued (or not issued) in our discretion to incorporate such changes.

1-574-295-8330
elkhartbrass.com



SAFE  FLEET
Driving Safety Forward™